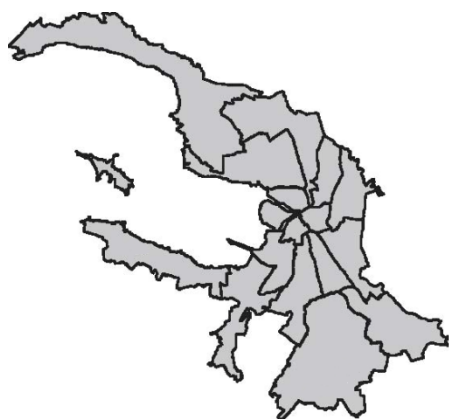


# **Saint-Petersburg**



2017 data on some of indicators are preliminary and subject to further revisions. For some indicators, data of 2016 are adjusted in comparison with the data published earlier.

The following designations are used in the pocketbook:

–	not applicable
...	not available
0,0	nil or less than half the final digit shown
x	impossibility of comparison
t.	times

In some cases rounding may lead to inconsistencies between the sum of constituent parts and the total.

Reproduction of state statistics authorities content is authorized, provided the source is acknowledged.

Catalogue code 11000918

E-mail: [pcs@stat78.spb.ru](mailto:pcs@stat78.spb.ru)  
<http://petrostat.gks.ru>

© Petrostat, 2018

## Historical and geographical information

Founded 27 May 1703

St. Petersburg	1703-1914
----------------	-----------

Petrograd	1914-1924
-----------	-----------

Leningrad	1924-1991
-----------	-----------

The original name of St. Petersburg was returned on 6 September 1991.

Capital of Russia in 1712-1918 (except 1728-1731).

An independent administrative-territorial unit since December 1931.

Federal city according to the constitution of the Russian Federation of 1993.

Geographical coordinate	59°57' north latitude 30°19' east longitude
-------------------------	--

Area of St. Petersburg is	1,4 thousand sq. km
---------------------------	---------------------

Population density	3,6 thousand person per 1 sq. km
--------------------	----------------------------------

Main river – Neva (32 km long within the city limits).

The city of Saint-Petersburg is divided into 18 districts and 111 municipal entities.

### Climate (2017)

Average annual temperature	+6,2°C
----------------------------	--------

Average temperature in January	-3,9°C
--------------------------------	--------

Average temperature in August	+17,4°C
-------------------------------	---------

Annual precipitation	820 mm
----------------------	--------

### Main socio-economic indicators in 2017

	Billion rubles	In % to 2016
Population size (end of the year), thousand persons	5351,9	101,3
Accrued average monthly wages of employees:		
nominal, rubles	54353	109,9
real	x	105,4
Unemployed, officially registered by State employment service (end of the year), thousand persons	11,8	100,7
Gross Regional Product (2016 year)	3742,2	102,3 <sup>1</sup>
Turnover of organizations (at current prices)	11743,4	102,9
Industrial production index	x	105,5
Volume of works performed by economic activity "construction"	497,8	72,7
Dwelling put in place, thousand sq. m	3536,1	113,5
Volume of communication services (at current prices)	121,5	104,6
Retail trade turnover	1326,3	103,4
Public catering turnover	72,4	104,5
Volume of market services rendered to population	494,1	102,8
Fixed capital investments	658,6	94,3
Consumer price index for goods and services (December 2017 to December 2016), %	x	104,3

<sup>1</sup> In % to 2015 year.

## Population

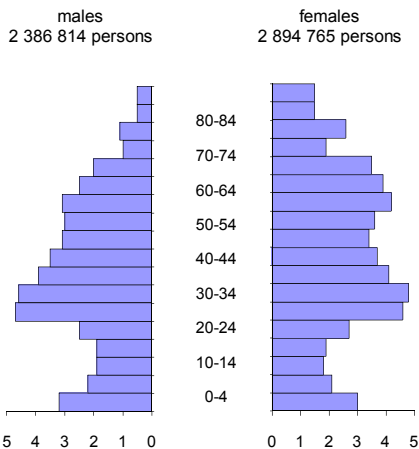
### Population size

(as of January 1; thousand persons)

	2016	2017	2018
Total	5225,7	5281,6	5351,9
males	2361,5	2386,8	...
females	2864,2	2894,8	...

### Age and sex structure of population

(as of January 1, 2017, %)



At the beginning of 2017 the median male age was 38,14 years, female age – 43,80 years; the life expectancy at birth for males was 70,25 years, for females – 78,94 years.

**Vital statistics**  
(per 1 000 population)

	2015	2016	2017
Births	13,6	13,8	12,5
Deaths	11,9	11,7	11,4
Natural increase	1,7	2,1	1,1
Marriages	10,9	9,6	9,9
Divorces	4,7	4,8	4,7

**Population by districts**  
(as of January 1, thousand persons)

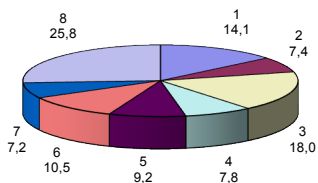
	2016	2017	2018
Admiralteiskiy	162,9	163,8	163,6
Vasileostrovskiy	208,7	209,2	209,6
Vyborgskiy	493,0	503,0	509,6
Kalininskiy	530,2	535,4	538,3
Kirovskiy	339,7	336,7	336,4
Kolpinskiy	186,4	187,6	188,7
Krasnogvardeiskiy	348,2	351,6	357,9
Krasnosel'skiy	366,4	369,8	383,1
Kronshtadtskiy	44,4	44,5	44,4
Kurortny	75,1	76,1	76,9
Moskovskiy	337,2	343,9	350,6
Nevskiy	506,2	511,5	519,4
Petrogradskiy	136,6	135,6	134,8
Petrodvortsovy	135,6	138,1	140,9
Primorskiy	549,8	555,4	565,4
Pushkinskiy	178,6	193,2	208,7
Frunzenskiy	405,3	406,0	401,4
Tsentral'ny	221,4	220,2	222,2

**Labor market**

**Average number of  
employees in organizations in 2017**

	<b>Thousand persons</b>	<b>In % to 2016</b>
Total	2056,7	100,1
including by economic activity:		
agriculture, forestry, fishing	4,9	102,0
mining and quarrying	2,1	131,2
manufacturing	289,1	100,2
electricity, gas, steam and air conditioning supply	34,2	100,1
water supply, sewerage, waste management and remediation activities	20,3	94,2
construction	153,1	93,6
wholesale and retail trade; repair of motor and motorcycle vehicles	369,7	99,6
transportation and storage	161,2	102,5
activity of hotels and catering establishments	48,7	98,8
information and communication activities	69,1	105,1
financial and insurance activities	52,7	101,6
real estate activities	81,3	101,4
professional, scientific and technical activities	189,9	101,1
administrative and related additional services	66,5	98,2
state administration and provision of military security, social security	85,8	104,0
education	215,6	100,1
activities in the field of health and social services	147,1	100,1
activities in the field of culture, sports, leisure and entertainment	43,8	102,2
provision of other types of services	21,5	97,1

**Structure of average  
number of employees in organizations  
by economic activity in 2017 (%)**



- 1 –manufacturing
- 2 –construction
- 3 –wholesale and retail trade; repair of motor and motorcycle vehicles
- 4 –transportation and storage
- 5 –professional, scientific and technical activities
- 6 –education
- 7 –activities in the field of health and social services
- 8 –provision of other types of services

**Unemployed officially registered  
in State employment service  
(end of the year)**

	2015	2016	2017
Total, thousand persons	13,5	11,8	11,8
Unemployment rate as a percentage of labor force, %	0,5	0,4	0,4

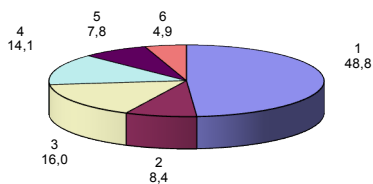


## Living standards of population

### Money income and consumer expenditure

	2015	2016	2017
Average per capita money income (annually) thousand rubles	479,2	494,0	493,5
Consumption expenditure, per capita (annually) thousand rubles	329,9	355,1	377,0
Real money income, % of the previous year	98,9	97,2	96,9

### Structure of personal consumption expenditure in 2017(%)



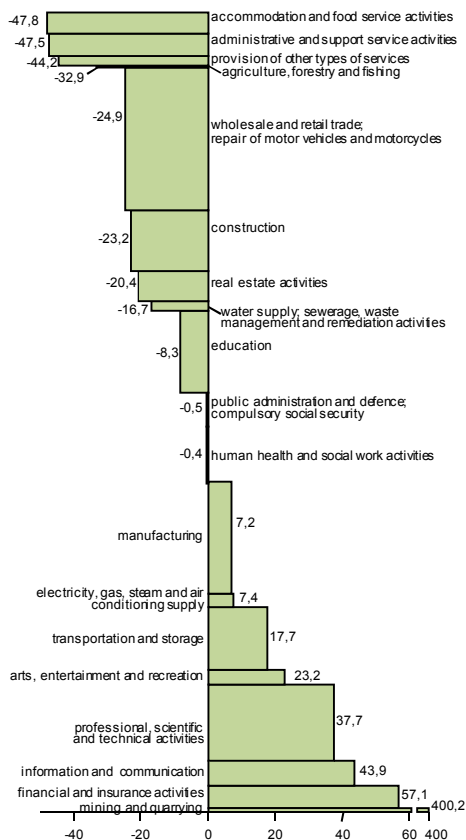
- 1 – purchase of goods
- 2 – savings<sup>1</sup>
- 3 – payment for services
- 4 – obligatory dues and contributions
- 5 – currency purchase
- 6 – payments for goods (services) using credit cards abroad

<sup>1</sup> Savings in deposits and bonds, funds in bank accounts of individual entrepreneurs, loan debts, acquisition of real estate and etc.

**Accrued average monthly  
wages of employees in 2017**

	<b>Nominal, ruble</b>	<b>Real, % of 2016</b>
Total	54353	105,4
agriculture, forestry, fishing	36486	102,3
mining and quarrying	271884	105,6
manufacturing	58270	105,5
electricity, gas, steam and air conditioning supply	58352	103,2
water supply, sewerage, waste management and remediation activities	45253	106,3
construction	41761	111,3
wholesale and retail trade; repair of motor and motorcycle vehicles	40813	105,6
transportation and storage	63973	103,8
activity of hotels and catering establishments	28399	100,8
information and communication activities	78209	103,7
financial and insurance activities	85375	101,2
real estate activities	43263	103,7
professional, scientific and technical activities	74838	103,8
administrative and related additional services	28561	102,4
state administration and provision of military security, social security	54080	98,6
education	49825	107,0
activities in the field of health and social services	54116	109,1
activities in the field of culture, sports, leisure and entertainment	66964	99,4
provision of other types of services	30321	101,7

**Declining between the average monthly  
wages by economic activity and  
the average level in St. Petersburg in 2017 (%)**



**Number of pensioners<sup>1</sup>**  
(as of January 1, thousand persons)

	<b>2016</b>	<b>2017</b>	<b>2018</b>
Total	1447	1468	1482
including pension recipients:			
old-age pension	1294	1315	1330
disability pension	64	61	57
survivor's pension	18	18	19
social pension	67	71	72

<sup>1</sup> Data are given for pensioners who are members of the Pension fund of the Russian Federation for Saint-Petersburg and Leningrad region.

**Average pension<sup>1</sup>**  
**as of January 1, 2018**

	<b>Rubles</b>	<b>Real pension, % of January 1, 2017</b>	
		<b>including O-TP-2017<sup>2</sup></b>	<b>excluding O-TP-2017<sup>2</sup></b>
Total	14924	76,2	103,4
old-age pension	15601	77,1	103,3
disability pension	9164	65,4	103,3
survivor's pension	9905	70,6	111,5
social pension	8165	61,0	99,1

<sup>1</sup> According to the real-time of the Pension fund of the Russian Federation.

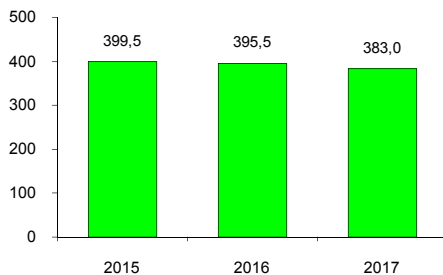
<sup>2</sup> O-TP-2017 – one-time payment of 5000 rubles in January 2017, in accordance with the Federal law of 22.11.2016 № 385-FZ.

**Minimum subsistence level<sup>1</sup>**  
(average per capita, rubles monthly)

	2015	2016	2017
Population, total	9995	10408	10737
including by social and demographic groups:			
working-age population	10965	11435	11806
pensioners	7980	8332	8573
children	9600	10034	10349

<sup>1</sup> It is calculated on the basis of data established by the Government of St. Petersburg for quarters I–IV.

**Ratio of the average  
per capita money income and  
the minimum subsistence level (%)**



**Foodstuffs consumption**  
(per person/annually, kilos)

	2014	2015	2016
Meat and meat products including edible offal	70	70	72
Milk and dairy products	312	312	312
Eggs, pieces	318	317	321
Bread and bakery products	88	87	88
Potatoes	73	74	77
Vegetables	82	82	82
Vegetables oil	12	11	11
Sugar	37	37	37

**Housing stock<sup>1</sup>**  
(end of the year)

	2015	2016	2017
Total number of apartments, thousand	2013,6	2068,1	2145,8
Total dwelling floor space, million sq. m	123,1	128,3	133,1
Average living floor space per one inhabitant, sq. m	23,6	24,3	24,9

<sup>1</sup> Information is compiled from data of local self-governing bodies for the not full range of owners of the housing stock.

## Social Field

### Pre-school institutions (end of the year)

	2015	2016	2017
Number of institutions	1185	1192	1196
Number of pupils, thousand persons	244,2	254,6	264,1
Number of children per 100 places in pre-school	108	109	111

### General educational institutions (including evening (shift-type) general educational institutions)<sup>1</sup> (beginning of the academic year)

	2015/16	2016/17	2017/18
<b>Public and municipal institutions</b>			
Number of institutions	693	686	687
Number of students, thousand persons	422,3	440,5	463,2
<b>Private institutions</b>			
Number of institutions	54	54	57
Number of students, thousand persons	5,4	5,6	6,3

<sup>1</sup> Here and further – according to the data of the Ministry of Education and Science of the Russian Federation.

**Public and municipal  
educational institutions providing secondary  
vocational education<sup>1</sup>**

(beginning of the academic year)

	<b>2015/16</b>	<b>2016/17</b>	<b>2017/18</b>
Number of institutions	110	110	110
Number of students, thousand persons	87,5	89,0	93,2
Number of graduates, thousand persons <sup>2</sup>	20,9	19,7	20,3

<sup>1</sup> Including institutions of higher education and branch campuses.

<sup>2</sup> In 2015, 2016 and 2017, respectively.

**Educational institutions  
of higher education**

(beginning of the academic year)

	<b>2015/16</b>	<b>2016/17</b>	<b>2017/18</b>
<b>Public and municipal institutions</b>			
Number of institutions	46	43	43
Number of students, thousand persons	272,9	268,5	270,8
Number of graduates <sup>1</sup> , thousand persons	74,5	65,4	58,5
<b>Private institutions</b>			
Number of institutions	37	34	29
Number of students, thousand persons	30,4	25,0	22,7
Number of graduates <sup>1</sup> , thousand persons	7,7	13,1	8,7

<sup>1</sup> In 2015, 2016 and 2017, respectively.



### Public health and recreation organizations

	2015	2016	2017
<b>Hospitals<sup>1</sup> (end of the year)</b>			
Number of hospitals	112	118	...
Per 10 000 population:			...
hospital beds <sup>2</sup>	86	84	...
physicians	74	78	...
medium-level medical personnel	112	111	...
<b>Sanatoriums and resort establishments, recreation organizations</b>			
Total	36 <sup>3</sup>	38	60
Number of beds in them, thousand	9,7 <sup>3</sup>	10,0	...
Number of patients served, thousand persons	175 <sup>3</sup>	165	234
<b>Children sanitary establishments (camps)</b>			
Total	216	211	213
Number of children who rested in the camps during the summer, thousand persons	75,8	71,5	56,4

<sup>1</sup> Excluding institutions subordinated to the Leningrad region authorities, located on the territory of St. Petersburg; excluding micro businesses.

<sup>2</sup> 24-hour hospital beds (without day hospital beds).

<sup>3</sup> Excluding micro businesses.

**Culture and leisure<sup>1</sup>**  
(end of the year)

	2015	2016	2017
<b>Public libraries<sup>2</sup></b>			
Number of libraries, total	245	198	199
Library stock, million copies	54,3	52,9	53,1
Per 100 population, copies	1039	1001	992
Visitors, thousand	1272	1200	1200
<b>Clubs and related establishments</b>			
Number of clubs and related organizations, total	46	27	37
Number of seats, thousand	...	14,1	20,3
<b>Professional theatres<sup>3</sup></b>			
Number of theatres, total	38	38	38
Theatre attendance, millions persons	4,1	4,5	4,4
<b>Museums</b>			
Number of museums, total	53	55	55
Number of visits, millions	23,1	23,8	24,4

<sup>1</sup> According to the data of the Ministry of culture of Russian Federation (<https://fedstat.ru>).

<sup>2</sup> Including The National Library of Russia.

<sup>3</sup> Including theatres subordinated to the Leningrad region authorities located on the area of Saint-Petersburg.

**Hotels and similar accommodation establishments**

	2015 <sup>1</sup>	2016	2017
Total, units	182	381	785
Number of beds, thousand	41,4	51,6	76,9
Number of placed persons, thousand	2887	3611	5011
of which:			
russian citizens	1885	2336	3349
foreign citizens	1002	1275	1662

<sup>1</sup> Excluding micro businesses.

## Turnover of organizations

### Turnover of organizations by economic activity in 2017

	<b>Billion rubles</b>	<b>In % to 2016</b>
Total	11743,4	102,9
agriculture, forestry and fishing	10,0	101,4
mining and quarrying	49,1	137,3
manufacturing	3256,9	105,8
electricity, gas, steam and air conditioning supply	362,6	105,9
water supply, sewerage, waste management and remediation activities	62,2	107,2
construction	411,9	95,4
wholesale and retail trade; repair of motor and motorcycle vehicles	5316,3	101,2
transportation and storage	754,6	100,3
activity of hotels and catering establishments	110,2	107,5
information and communication activities	320,8	108,8
real estate activities	330,5	108,5
professional, scientific and technical activities	461,9	98,9
administrative and related additional services	62,1	94,2
state administration and provision of military security, social security	3,1	116,7
education	52,4	117,4
activities in the field of health and social services	125,2	99,4
activities in the field of culture, sports, leisure and entertainment	32,9	125,5
provision of other types of services	20,8	104,2

## Industry

### Industrial production index<sup>1</sup>

	2015	2016	2017
Industrial production index	92,9	103,8	105,5
mining and quarrying	83,1	144,3	106,0
manufacturing	92,7	103,7	105,7
from them:			
food products	94,8	126,8	105,3
beverages	95,5	101,9	98,2
tobacco products	100,8	120,1	84,9
clothing	91,7	93,3	98,2
leather and leather products	105,0	47,3	1,8 t.
wood and cork products, except furniture, straw products, plaiting materials, woodworking	101,8	100,7	104,1
paper and paper products	95,3	117,9	100,6
activity poligraphic and copying of information carriers	—	—	98,1
chemicals and chemical products	92,7	105,8	93,8
medical products and materials used for medical purposes	95,5	127,6	105,0
rubber and plastic products	111,3	118,9	160,0
other non-metallic mineral products	97,4	91,1	99,5
basic metals	115,5	79,3	105,7
fabricated metal products except machinery and equipment	95,5	85,9	91,4
computers, electronic and optical products	86,5	100,8	89,9
electrical equipment	65,1	108,8	98,8

	ending		
	2015	2016	2017
machines and equipment not included in other groups	94,4	57,3	103,6
motor vehicles, trailers and semi-trailers	78,6	87,0	118,4
other transport equipment	138,1	103,5	96,8
furniture	87,5	79,6	104,0
other manufacturing	98,3	85,6	141,2
electricity, gas, steam and air conditioning supply	95,3	105,5	102,6
water supply, sewerage, waste management and remediation activities	93,9	104,4	110,1

<sup>1</sup> 2015-2016 years – results of a retrospective recalculation of production indices in accordance with the transition from the year 2017 to OKVED2.

### Production of basic products in 2017

	2017	In % to 2016
Meat and edible offal, ton	34,3	102,4
Meat preparations (containing meat) subfrozen and frozen, thousand ton	43,9	71,5
Fish processed and canned, thousand ton	118,8	121,0
Whole-milk products (converted into whole milk), thousand ton	146,9	95,0
Cheese, cottage cheese products, thousand ton	10,7	93,3
Products fermented (excluding cottage cheese products), thousand ton	88,3	92,3
Flour, thousand ton	426,1	102,8
Bakery products of non-durable storage, thousand ton	287,3	101,4
Bakery products for long-term storage, low humidity, semi-finished bakery products, thousand ton	16,4	100,1
Confectionery products, thousand ton	215,9	85,8
Lumber, thousand m <sup>3</sup>	19,9	4,0 t.
Paper and cardboard, thousand ton	42,1	95,8
Materials for paint and varnish, thousand ton	184,9	110,5
Medical preparations, billion rubles	19,2	92,9
Plastic window blocks, thousand m <sup>3</sup>	364,5	1,6 t.
Blocks and other products, prefabricated, for buildings and structures of cement, of concrete or of artificial stone, thousand m <sup>3</sup>	735,9	97,7
Concrete ready for pouring, ready-mixed concrete, million m <sup>3</sup>	2,0	133,4
Constructions and details of constructions from ferrous metals, thousand ton	267,1	92,8
Electricity, billion kWh	21,6	107,0
Steam and hot water, million Gcal	47,6	102,2

**Construction**  
**Volume of work**  
**performed by "construction"<sup>1</sup>**

	2015	2016	2017
Total, billion rubles	592,3	626,1	497,8
% of the previous year	88,8	100,4	72,7

<sup>1</sup> Including building works that were made using own resources.

**Construction of dwellings**

	2015	2016	2017
Dwellings put in place:			
Flats, thousand	52,2	57,4	69,5
Total floor space thousand sq. m	3031	3116	3536
% of the previous year	92,9	102,8	113,5

**Construction of social facilities**

	2015	2016	2017
Pre-school educational institutions, places	1769	2695	2810
General educational schools, pupil places	1125	3675	1650
Polyclinics (out-patient facilities), visits per shift	1192	220	420

## Transport and communications

### Transportation of goods and freight turnover

	2015	2016	2017
<b>Transportation of goods, mln. ton</b>			
Total	236,4	268,4	...
of which by motor <sup>1</sup>	6,7	8,6	7,5
<b>Freight turnover, bil. ton-km</b>			
Total <sup>2</sup>	142,5	169,5	180,8
of which by motor <sup>1</sup>	1,7	1,6	2,3

<sup>1</sup> Commercial transportation by organizations of all economic activities; excluding small businesses.

<sup>2</sup> The data on turnover of goods given without railway transport. JSC Russian Railways does not distribute the volume of freight and passenger turnover by constituent entities of the Russian Federation.

### Passenger transportation and passenger turnover of public automobile transport

	2015	2016	2017
Passenger transportation, mln. persons	535,5	545,8	574,8
Passenger turnover, mln. passenger-km	3191,4	3236,9	3417,9



**Passenger transportation by  
urban passenger transport<sup>1</sup>**

	2015	2016	2017
Passenger transportation, mln. persons	1581	1589	1582
of which public transport bus (inner-city transportation)	520	523	544

<sup>1</sup> Excluding small businesses.

**Length of transport lines and  
urban rolling stock of passenger transport<sup>1</sup>**

	2015	2016	2017
Operational length of transport routes, km:			
tramway lines	239	237	232
trolley-bus lines	324	324	324
subway lines	114	114	114
Rolling stock, units:			
buses	6135	6452	6152
tram cars	790	787	771
trolley-buses	640	635	698
subway cars	1644	1681	1787

<sup>1</sup> Excluding small businesses.

**Volume of communication services<sup>1</sup>**

	2015	2016	2017 <sup>2</sup>
Total, billion rubles	121,4	126,5	121,5
% of the previous year	101,8	103,0	104,6

<sup>1</sup> At current prices; full range of communications service providers.

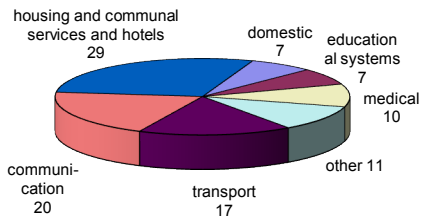
<sup>2</sup> «The volume of telecommunication services»; excluding small business entities.

## Trade and services rendered to population

### Consumer market

	2015	2016	2017
Retail trade turnover, billion rubles	1144,6	1234,3	1326,3
% of the previous year	95,0	100,1	103,4
Public catering turnover, billion rubles	57,2	67,7	72,4
% of the previous year	96,6	113,0	104,5
Market services rendered to population, billion rubles	414,1	447,4	494,1
% of the previous year	98,9	101,7	102,8
including personal services rendered to population			
billion rubles	34,2	34,5	36,4
% of the previous year	106,2	97,2	101,8

### Structure of market services rendered to population in 2017 (%)



## Finances

### Consolidated budget of St. Petersburg<sup>1</sup> (billion rubles)

	2015	2016	2017
Revenue	447,4	485,9	522,2
Expenditure	439,7	505,2	565,1
Profit, deficit (-)	7,7	-19,3	-42,9

<sup>1</sup> At current prices.

### Structure of revenue and expenditure of the consolidated budget (%)

	2015	2016	2017
<b>Revenue</b>			
Total	100	100	100
of which:			
profit (income) tax of organizations	24,9	26,0	27,2
income tax of individuals	40,5	41,0	42,7
excises	4,3	4,4	3,4
revenue from use of state and municipal property	5,5	4,9	3,8
uncompensated revenue	5,4	4,9	4,0
<b>Expenditure</b>			
Total	100	100	100
of which:			
national defense	0,8	0,7	0,6
housing-communal utilities	11,2	10,5	11,0
social-cultural arrangements	60,5	59,1	59,0
including:			
on education	24,1	23,3	23,9
on culture and cinema	3,5	3,6	3,7
on mass media	0,4	0,3	0,3
on public health	16,2	15,2	16,1
on physical culture and sports	2,5	4,0	2,1
on social policy	13,8	12,6	12,8

### Financial activities of organizations<sup>1</sup>

	2015	2016	2017
Balanced financial results (profit less loss), billion rubles	489,7	925,1	753,0
Number of loss-making organizations:			
total	518	430	504
% of total number of organizations	19,6	16,3	18,5
Amount of loss, billion rubles	176,4	118,1	206,1

<sup>1</sup> Excluding small businesses, banks, insurance enterprises and budget-funded establishments.

### Ratio of profitable and loss-making organizations by economic activity in 2017 (%)



## Investments<sup>1</sup>

### Fixed investments by economic activity in 2017

	Million rubles	In % to 2016
Total	477209	89,4
agriculture, forestry and fishing	187	112,6
mining and quarrying	137	2,9 t.
manufacturing	62743	78,3
electricity, gas, steam and air conditioning supply	46296	104,7
water supply, sewerage, waste management, remediation activities	9359	87,4
construction	37825	97,6
wholesale and retail trade; repair of motor and motorcycle vehicles	25439	64,8
transportation and storage	64276	41,8
activity of hotels and catering establishments	2451	116,6
information and communication activities	18120	70,2
financial and insurance activities	30734	1,5 t.
real estate activities	124378	2,2 t.
professional, scientific and technical activities	19452	47,5
administrative and related additional services	2356	66,3
state administration and provision of military security, social security	5413	145,9
education	9523	90,1
activities in the field of health and social services	6145	61,4
activities in the field of culture, sports, leisure and entertainment	12258	1,9 t.
provision of other types of services	117	1,9 t.

<sup>1</sup> Excluding small businesses

**Fixed capital investments by  
sources of financing (%)**

	2015	2016	2017
Total	100	100	100
own funds	50,0	64,2	57,4
obtained funds	50,0	35,8	42,6
of which:			
budget funds (funds of consolidated budget)	26,9	16,0	21,7
including:			
of the federal budget	12,6	5,8	5,0
of the budgets of constituent entities of the Russian Federation	14,2	9,7	16,7

## Prices and tariffs

### Price and tariff indices

(December to December of the previous year, %)

	2015	2016	2017
Consumer price index	113,2	105,2	103,7
Industrial producer price index <sup>1</sup>	117,0	106,3	100,6
Aggregated price index for investment purpose products (expenses and services)	110,4	102,6	105,8
Freight tariff index	112,4	108,5	98,7

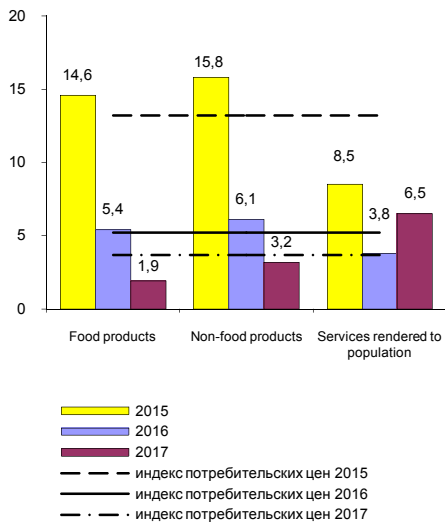
<sup>1</sup> 2015-2016 years — results of a retrospective recalculation of production indices in accordance with the transition from the year 2017 to OKVED2.

### Consumer price index

(December to December of the previous year, %)

	2015	2016	2017
Total goods and services rendered to population	113,2	105,2	103,7
Food products	114,6	105,4	101,9
including:			
foodstuffs	114,5	105,1	101,4
alcoholic beverages	115,1	107,9	104,9
Non-food products	115,8	106,1	103,2
including:			
clothing and bedlinen	115,5	109,0	103,9
leather, textile and combined footwear	121,0	107,1	105,3
tobacco products	128,0	119,7	112,0
Services rendered to population	108,5	103,8	106,5
Including:			
housing and public utilities	106,7	109,2	107,5

**Rate of price increases**  
(December to December  
of the previous year, %)



**Price indices in the fuel market**  
(December to December of the previous year, %)

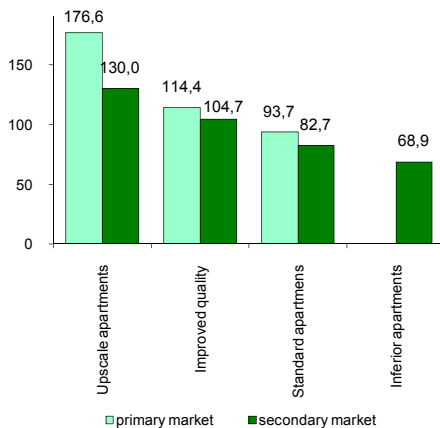
	2015	2016	2017
Gasoline	105,4	103,1	106,7
A-92	105,7	103,0	107,7
A-95	104,8	103,2	106,0
Diesel fuel	102,8	105,3	109,1



**Price indices in dwelling market**  
(IV quarter to IV quarter of the previous year, %)

	2015	2016	2017
<b>Primary market</b>			
All apartments	97,9	108,0	103,7
standard	97,5	108,1	104,0
with improved quality	97,8	107,8	98,1
upscale	102,1	107,3	108,4
<b>Secondary market</b>			
All apartments	104,6	99,4	100,1
inferior	100,0	100,0	89,6
standard	105,9	99,5	102,2
with improved quality	101,1	98,9	98,9
upscale	–	100,0	100,0

**Prices in dwelling market in IV quarter 2017**  
(thousand rubles per sq. m of total floor space)



**Average retail prices for products included in  
the minimal set of food products in December**  
(rubles per kilo)

	2015	2016	2017
Beef (except boneless meat)	324,5	325,3	330,9
Pork (except boneless meat)	253,0	246,5	242,2
Mutton (except boneless meat)	361,9	372,8	390,3
Chicken	133,0	136,4	121,5
Frozen fish, non-cut	160,1	192,9	170,9
Herring salted	215,6	227,9	226,5
Butter	489,1	621,6	664,4
Vegetable oil	119,8	131,4	122,3
Margarine	171,9	187,8	191,4
Whole milk pasteurized, fat status 2,5-3,2%, per liter	58,9	62,0	64,6
Sour cream	159,0	168,7	177,9
Non-fat curds	269,7	298,2	318,0
Rennet cheeses, hard and soft	404,0	438,6	454,3
Eggs, for ten pieces	67,4	67,1	56,2
Sugar	55,6	50,2	37,7
Biscuits	149,9	163,1	163,2
Caramel	207,7	227,7	232,3
Salt	11,9	12,2	12,0
Black tea	677,7	740,2	746,9
Pepper black	2040,1	2349,3	2365,9
Wheat flour	40,7	40,6	41,0
Rye and rye-wheat bread	63,1	68,4	72,9
Bread and bakery products from wheat flour of I and II grades	67,9	70,6	76,5
White rice	88,5	92,0	90,7
Millet	45,3	44,2	37,9
Pea and bean	45,7	51,9	46,4
Vermicelli	98,3	102,6	101,1
Potatoes	22,0	23,6	25,1
Cabbage	22,9	20,1	16,7
Onion	30,7	25,9	24,1
Carrots	30,7	26,5	25,4
Cucumbers	160,2	138,1	151,1
Apples	99,4	90,6	95,6

## External economic activities<sup>1</sup>

### External trade turnover (billion US dollars)

	2015	2016	2017
Turnover	36,0	37,1	44,6
export	15,7	15,8	21,8
import	20,3	21,3	22,8
Balance of external trade turnover	-4,5	-5,6	-1,0

<sup>1</sup> According to the North-West customs administration of the Russian Federation.

### External trade turnover by countries in 2017 (billion US dollars)

	External trade turnover		of which	
	total	% of total	export	import
Total	44,6	100	21,8	22,8
of which: non-CIS countries	40,6	91,0	19,1	21,5
of which:				
China	5,9	13,1	1,2	4,7
Netherlands	5,5	12,3	5,2	0,3
Germany	3,7	8,3	1,7	2,0
USA	2,1	4,8	1,1	1,0
Republic of Korea	1,8	4,0	0,4	1,4
Finland	1,6	3,6	0,4	1,2
Japan	1,5	3,4	0,2	1,3
Italy	1,4	3,2	0,6	0,8
India	1,0	2,4	0,7	0,4
CIS countries	4,0	9,0	2,7	1,3
of which				
Belarus	2,2	4,9	1,3	0,9
Kazakhstan	0,8	1,9	0,7	0,1

## Contents

Historical and geographical information .....	3
Main socio-economic indicators in 2017 .....	4
Population .....	5
Labour market .....	7
Living standard of population .....	9
Social Field .....	15
Turnover of organization .....	19
Industry .....	20
Construction .....	23
Transport and communications .....	24
Trade and services rendered to population .....	26
Finances .....	27
Investments .....	29
Prices and tariffs .....	31
External economic activities .....	35

**Compiled by Department  
of Federal State Statistics Service  
of Russian Federation in  
St. Petersburg and Leningrad Region**

197376, St. Petersburg, Professora Popova str., 39  
Fax: +7 (812) 234-06-36, E-mail: [pcs@stat78.spb.ru](mailto:pcs@stat78.spb.ru)  
Responsible for the issue: Anna I. Filippova.  
Telephone: +7 (812) 234-00-31

Printed by Petrostat printing-office  
Signed for printing 26.06.2018  
Circulation 50 copies. Order N 87.